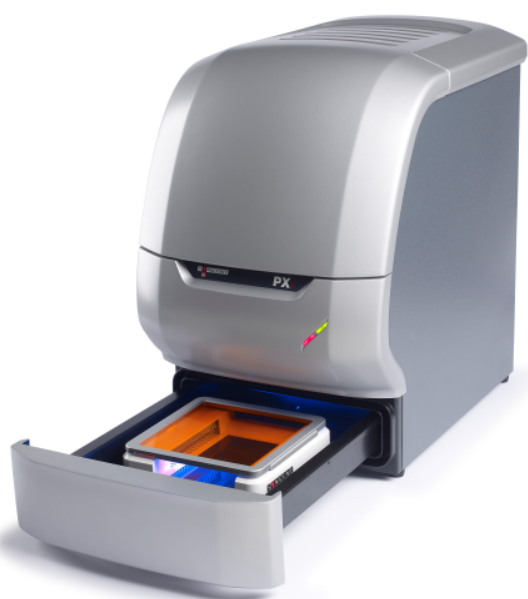


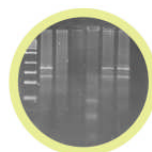
PXi

Perfection in imaging technology – the new, high resolution, multi-application imaging system

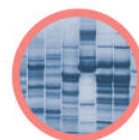
Compact and easy to use, **PXi** offers full automation in the capture of chemiluminescent and fluorescent blots, visible gels and blots and even 2D gels



DNA/RNA safe stained gel



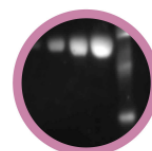
Coomassie blue gel



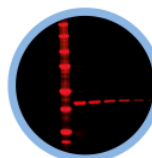
Silver stained gel



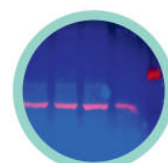
Chemiluminescence western blots



IR multiplexed western blots



Fluorescent multiplexed blots



- Superior sensitivity
- Superb image quality
- Application versatility
- Fully automated
- Powered by **GeneSys**

Why buy this product?

Performance

PXi offers superior sensitivity that is capable of imaging a wide range of applications. Image quality is superb whether you are working with chemiluminescent blots, fluorescent blots and gels, IR gels or 2D gels. With **GeneSys** control software no other system on the market offers this level of control. If you are looking for high quality and high performance then **PXi** is your number 1 choice.

High specification

At the heart of **PXi** is a new generation camera which has 6.3m pixels. These pixels are super sized at $9\mu\text{m} \times 9\mu\text{m}$, giving the camera outstanding sensitivity. The camera is cooled to enable longer exposures to be used which can be a necessity for chemiluminescence and for some fluorescence applications. The superior sensitivity ensures that even faint blots or gels can be imaged with **PXi**.

Modular

PXi uses a number of different lighting options including plug and play LED modules for Red, Green, Blue and IR light. This novel lighting system provides the user with the ability to perform coloured fluorescent, multiplex and colorimetric imaging. The new UltraSlim blue LED transilluminator provides you with the ideal solution for imaging 'safe dyes'.



CONTACT SYNGENE:
EUROPE
BEACON HOUSE
NUFFIELD ROAD
CAMBRIDGE
CB4 1TF

Tel: +44 (0)1223 727123
Fax: +44 (0)1223 727101
Email: sales@syngene.com
Email: support@syngene.com

IN USA:
5108 PEGASUS COURT, SUITE M
FREDERICK
MD 21704

Tel: 800 686 4407/301 662 2863
Fax: 301 631 3977
Email: ussales@syngene.com
Email: support@syngene.com

www.syngene.com
PXi0512