

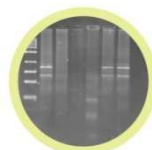
PXi/PXi Touch

Perfection in imaging technology –
the new, high resolution, multi-
application imaging system

Compact and easy to use, **PXi/PXi Touch** offers full automation in the capture of chemiluminescent and fluorescent blots, visible gels and blots and even 2D gels



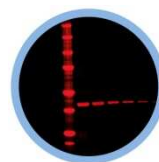
DNA/RNA safe stained gel



Chemiluminescence western blots



IR multiplexed western blots



Coomassie blue gel

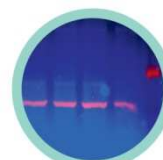


- Super sensitive 4, 6 or 8 million pixel camera
- Motorised 7 position filter wheel
- Blue LED transilluminator
- Upper and lower white light
- Epi blue, green, red and IR LED lighting modules
- Application versatility
- Fully automated
- Built-in touch screen and processor
- Powered by **GeneSys**

Silver stained gel



Fluorescent multiplexed blots



Why buy this product?

Performance

PXi/PXi Touch offers superior sensitivity that is capable of imaging a wide range of applications. Image quality is superb whether you are working with chemiluminescent blots, fluorescent blots and gels, IR gels or 2D gels. With **GeneSys** control software no other system on the market offers this level of control. If you are looking for high quality and high performance then **PXi/PXi Touch** is your number 1 choice.

High specification

At the heart of **PXi/PXi Touch** is a new generation of camera – 4, 6 or 8m pixels, giving the camera outstanding sensitivity. The cameras are cooled to enable longer exposures to be used which can be a necessity for chemiluminescence and for some fluorescence applications. The superior sensitivity ensures that even faint blots or gels can be imaged with **PXi/PXi Touch**.

Modular

PXi/PXi Touch uses a number of different lighting options including plug and play LED modules for Red, Green, Blue and IR light. This novel lighting system provides the user with the ability to perform coloured fluorescent, multiplex and colorimetric imaging. The new UltraSlim blue LED transilluminator provides you with the ideal solution for imaging 'safe dyes'. The **PXi Touch** has its own built-in screen and processor whereas the **PXi** is used with an external PC.



CONTACT SYNGENE:
EUROPE
BEACON HOUSE
NUFFIELD ROAD
CAMBRIDGE
CB4 1TF

Tel: +44 (0)1223 727123
Fax: +44 (0)1223 727101
Email: sales@syngene.com
Email: support@syngene.com

www.syngene.com
PXi0113

IN USA:
5108 PEGASUS COURT, SUITE M
FREDERICK
MD 21704

Tel: 800 686 4407/301 662 2863
Fax: 301 631 3977
Email: ussales@syngene.com
Email: support@syngene.com